

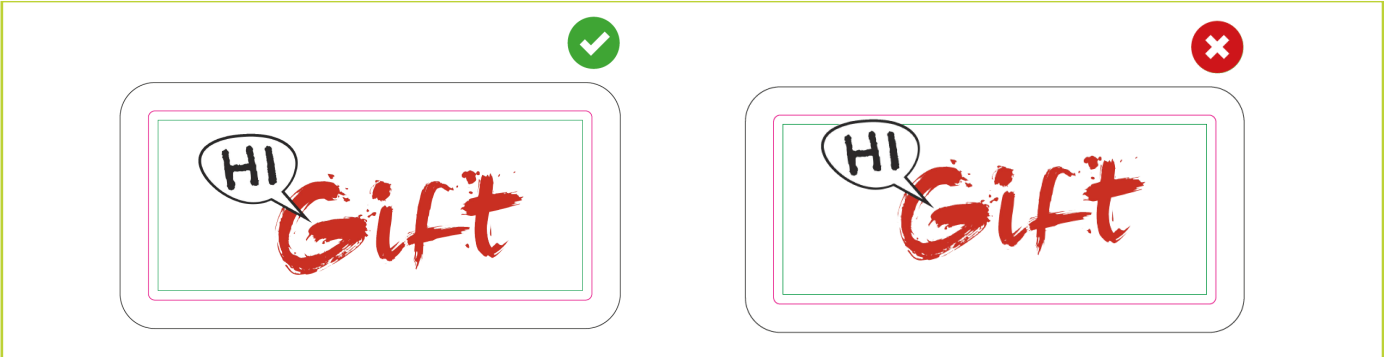
Print templates

HOW TO CREATE A PRINT EXECUTIVE CORRECTLY.

Follow the steps below to create a correct print file:

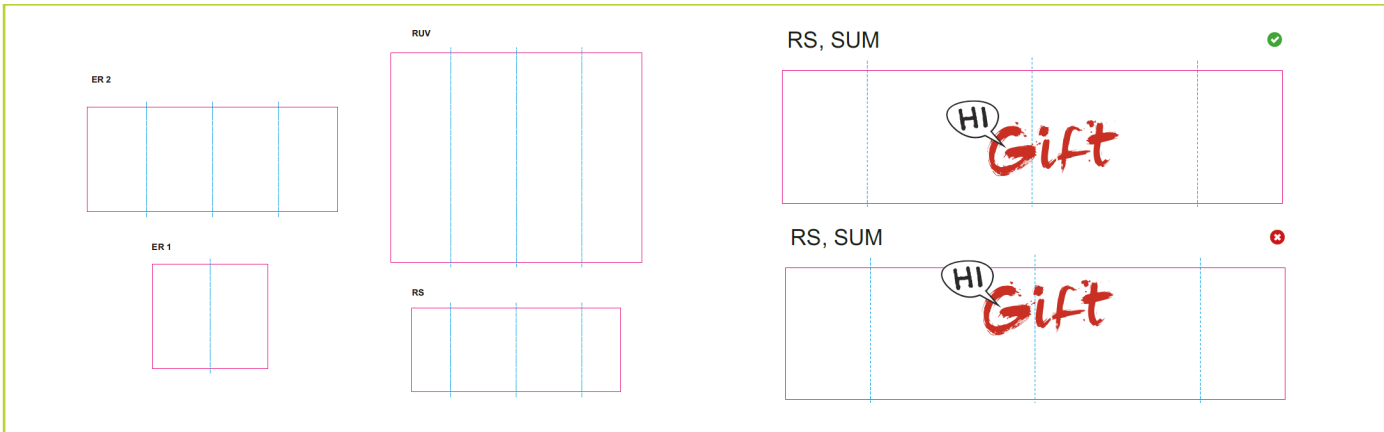
File format.
Send your file in PDF format on a scale of 1:1

Logos or lettering must be positioned within the safe area outlined with the green lines. Graphics may be extended up to the pink line as long as they do not contain any parts of the logo or lettering. The background of the graphics may be extended up to the black margin line.

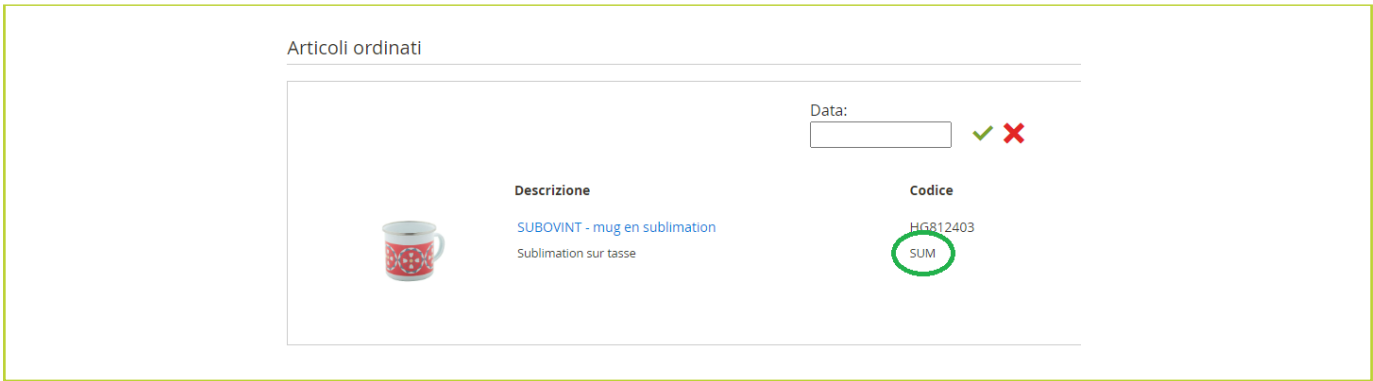


In files with several boxes, place your graphic inside the box marked with the code of the print chosen at the time of purchase.

The graphics must be contained within the continuous pink lines labelled 'Edge of graphics/printing'.



You can find the print code on the order page under the product code.



Print templates

The indications and guidelines can be found in the templates:

- Continuous green line - called 'Margin' - this line encloses the safe space within which logos, lettering, etc. can be positioned.
- Pink continuous line - called 'Edge of graphics/printing' - this line encloses the space within which graphics visible on the product can be placed.
- Continuous black line - called 'Blend limit' - this line indicates the cutting edge. It is possible to extend the background of the graphic up to this line.
- Dashed black line - called 'Seam' - this line indicates the seam made on the object
- Solid blue line - called 'Fold line' - this line indicates the fold line.
- Pink dashed line - called 'Cutting line' - this line indicates the cutting line.
- Dashed light blue line - called 'Centerlines' - lines indicating the centre of the sides of the product (right left and centre).
- Light blue dashed line - called 'Fold line' - indicates the fold line.
- Yellow dashed line - denoted 'Perforated' - perforation line
- Grey strip - referred to as 'NOT PRINTABLE AREA' - indicates spaces that cannot be printed.
- Grey strip - labelled 'Elements of the puzzle' - indicates the elements of the puzzle.
- Grey strip - labeled 'Graphics: just background colours' - indicates the spaces where only the background of the graphics can be printed.
- Arrow - labeled 'Design's orientation' - indicates the orientation of the graphics to be placed.