

Weekly planners

Milled paperback, general information.

The inside pages are milled (cut on one side with a cutter) and then glued together. The spine of the book is glued to the back cover. This results in a compact, stable and high-quality magazine. High-quality pure glue (polyurethane or HotMelt) is used for gluing. This method is ideally suited for heavy-use products. Hardening of the glue and full use are guaranteed after 48 hours.

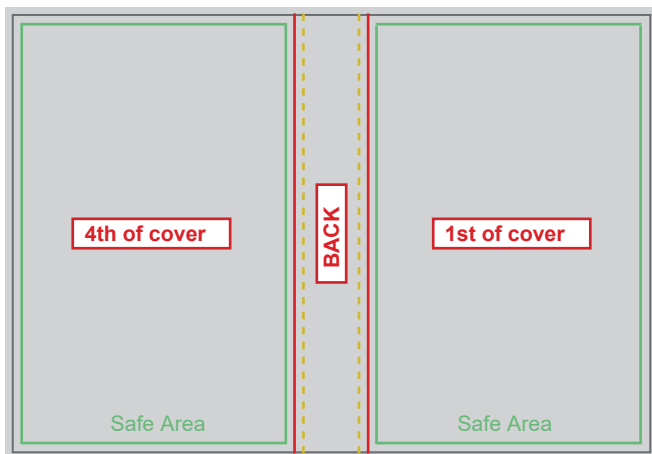
Cover realization.

You need to prepare a PDF file of two pages, one page containing 4th and 1st of cover and in a page containing 2nd and 3rd of cover, on both pages insert the space dedicated to the spine in the center.

Add 3 mm of bleed for each side of the open cover.

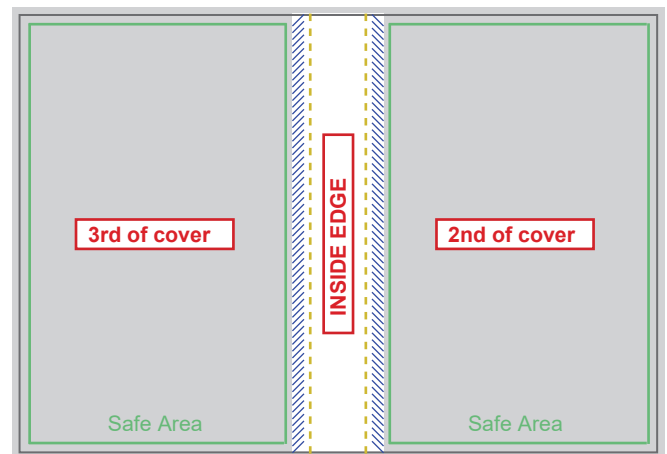
First page

4th of cover + spine + 1st of cover

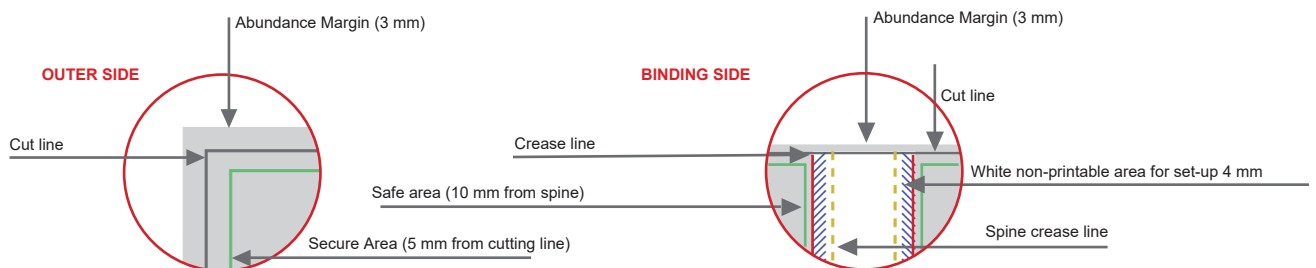


Second page

2nd of cover + spine + 3rd of cover



Area where colored backgrounds, graphic patterns and text cannot be inserted



The width of the spine depends on the total number of pages and the grammage of the paper chosen for the inside pages.

The outer spine (between the front and back cover) can be printed.

The inside spine CANNOT be printed, you have to add a white security strip of 4 mm per side in addition to the inside spine.

Example: if the spine of your diary measures 24 mm, you must leave for the inner spine a white band of 24 mm + 4 mm to the left of the spine + 4 mm to the right of the spine = total white band 32 mm.

So if the size of your diary is 165mm x 240mm and it develops a 24mm spine you have to create a cover:

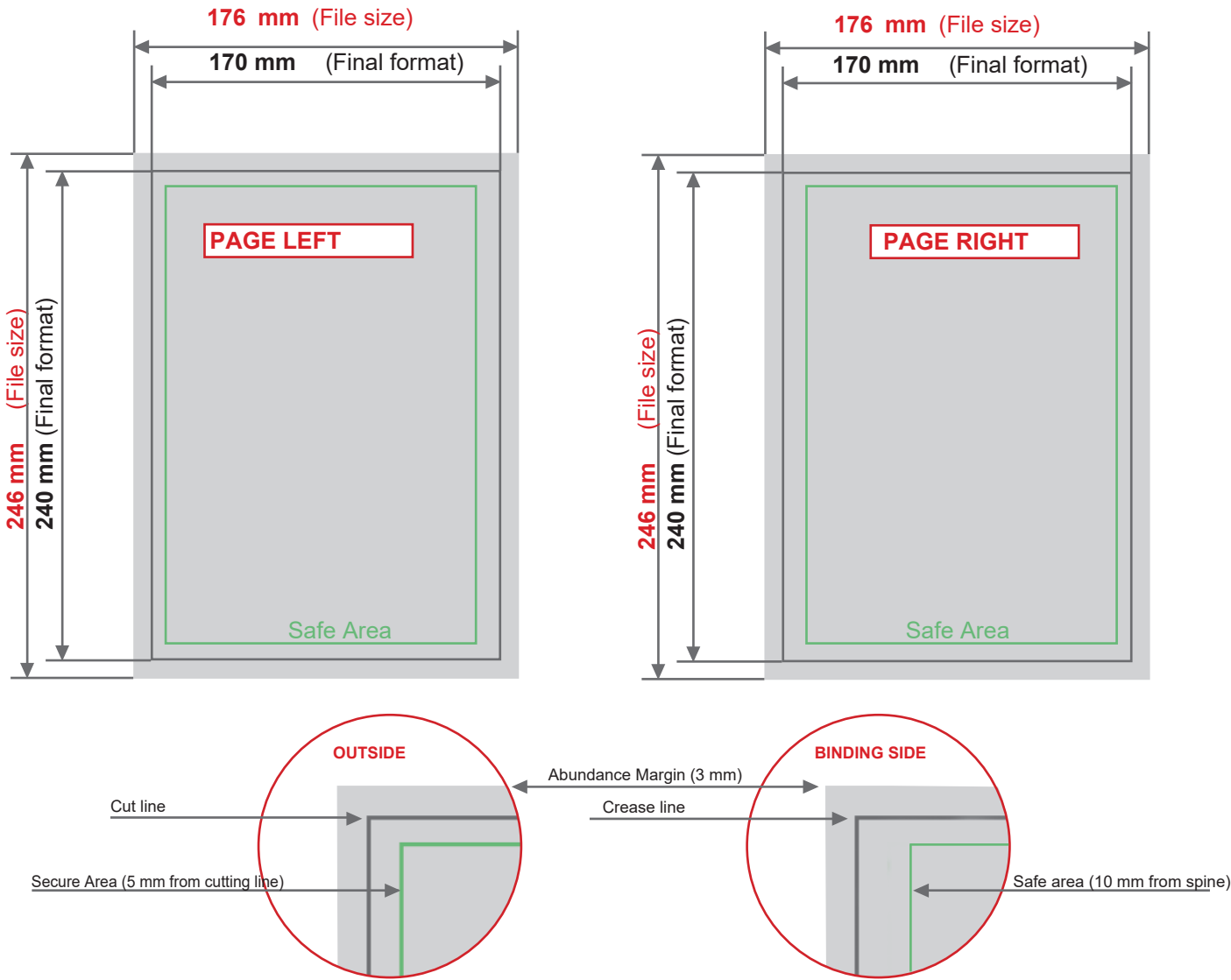
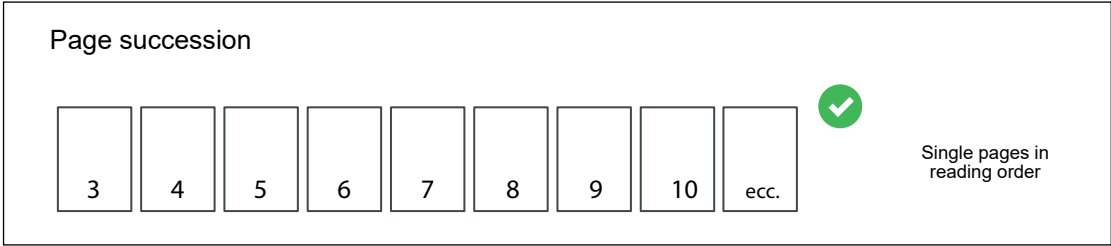
Base: 3 mm (bleed) + 165 mm + 24 mm (spine) + 165 mm + 3 mm (bleed) = 360 mm total

Height: 3 mm (bleed) + 240 mm + 3 mm (bleed) = 246 mm total.

Weekly planners

The creation of inner pages.

You have to prepare a file in PDF format, which must be supplied in single pages and in reading order. Any blank pages must be inserted within the file. The pages of the document must be single and not side-by-side. Add 3 mm of bleed on each side of the page. It is advisable to place texts 10 mm from the spine and 5 mm from the cut line to avoid them being cut off or unreadable.



Colours and Resolution.

Colours may appear slightly different depending on the print media used; this is due to the physical composition of the paper.

Files in PDF format must be sent in four-colour process (cyan, magenta, yellow, black) by assigning the CMYK profile Forga 39. If the files sent do not respect the described colour profile, they will be automatically converted according to our specifications before going to print. The dpi resolution of the file for printing is at least 150 dpi, the optimal resolution is 300 dpi. Fonts must be inserted in the PDF file or converted to curves/tracks.